

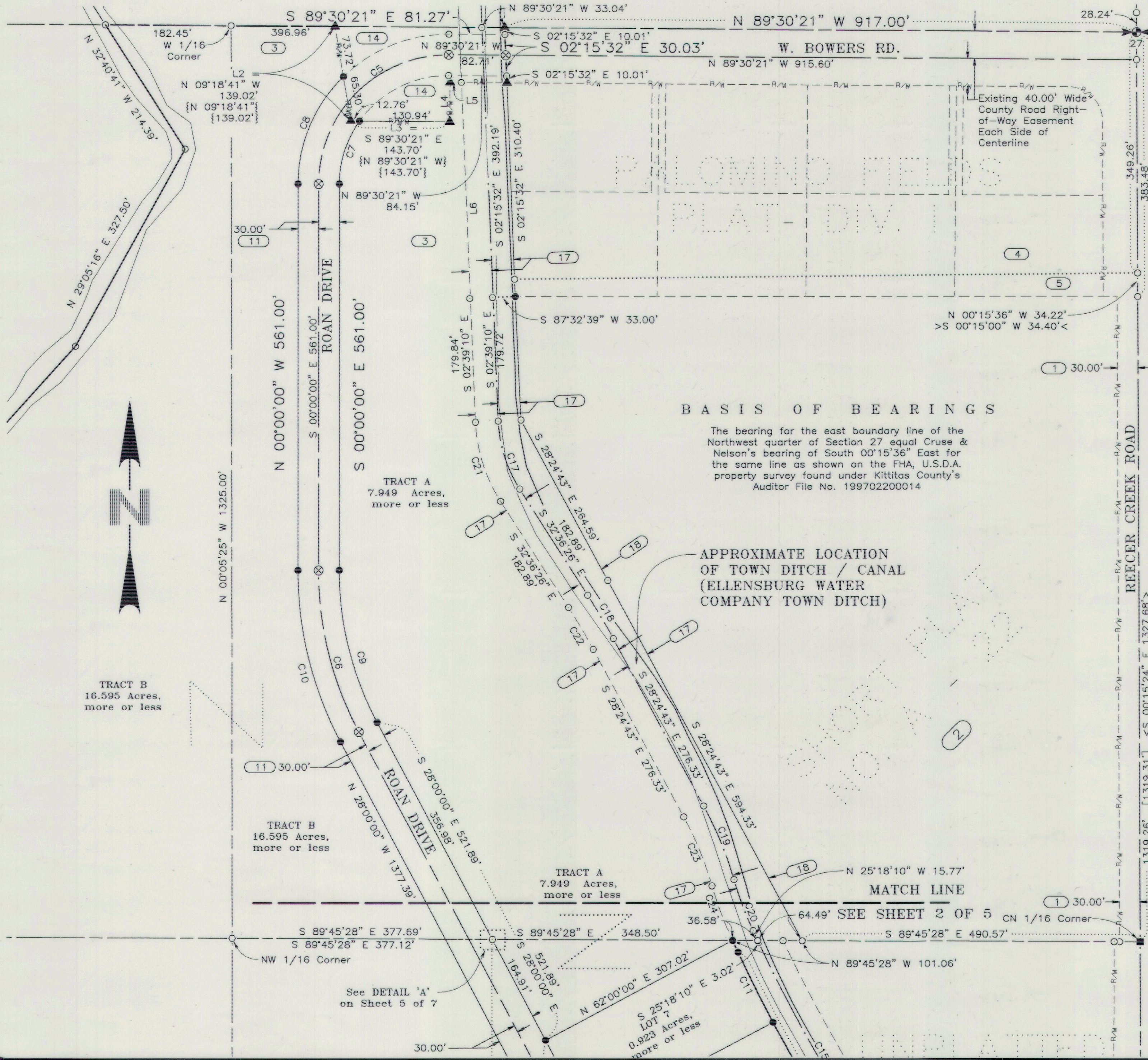
PALOMINO FIELDS PLAT - DIVISION II

A PTN. OF THE E 1/2 OF THE NW 1/4 OF SECTION 27, TOWNSHIP 18 NORTH, RANGE 18 EAST, W.M.
KITTITAS COUNTY, WASHINGTON

Receiving No.

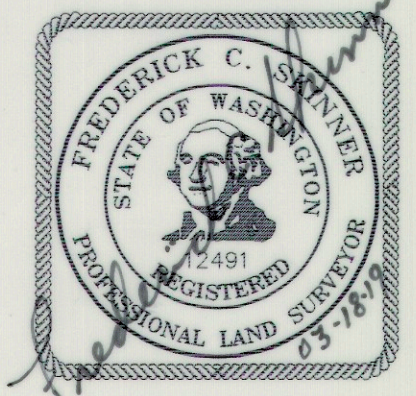
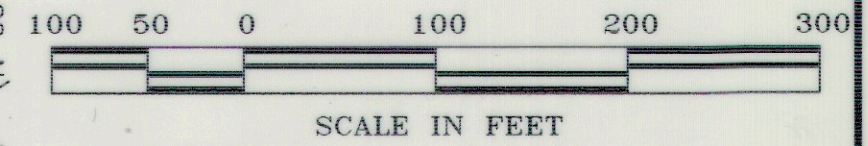
LP - 19-00003

181827



NOTICE

This is a Major Plat and as such is not intended to show, nor does it purport to show, all easements and encumbrances.



INSTRUMENT USED	INDEXING DATA
Trimble R10 GPS Receivers	 S27 T18N R18E
Traverse Closure Meets Standards Per WAC 332-130-090	

WESTERN PACIFIC ENGINEERING & SURVEY
A TERRA DEVELOPMENT SERVICES CORPORATION
1328 E. Hunter Place, Moses Lake, Washington
T:(509)765-1023 F:(509)765-1298
Services in Washington and Idaho

LCU, INC.

Surveyed by	LMH	Scale	1" = 100'
Drawn by	Tml/FCS	Sheet	3 of 7
Checked by	FCS	Project No.	18146

File --- Project Desc.: S:\18146\18146 DIV 2\18146 MP2.pro (Plotted - Apr 18, 2019)